

臺灣桃園國際機場 TAIPEI/TAIWAN TAOYUAN INTL AD

RCTP
ILS RWY05R (CAT II)

TAIPEI APP 125.1 128.5 125.6	TAIPEI TWR 118.7 129.3	ATIS 127.6	VAR 5° W	9000' MSA ARP 25NM
Apt Elev: 108'	Rwy05R DTHR Elev: 107'	Trans Level: FL130		
BEARINGS ARE MAGNETIC; DISTANCES ARE NAUTICAL MILES; ELEVATIONS, HEIGHTS IN FEET				

APPROACH SPEED CONTROL

- Unless otherwise instructed by ATC, pilot should follow the following speed control: Cross HUKOU/15 track miles from touchdown at 200-180 KT IAS; Cross TULIP at 180 KT IAS; Cross ICKS 5D at 160-150 KT IAS.
- If unable to comply with item 1, pilots shall advise ATC in advance.
- ATC instruction: "Cancel speed restriction below 10,000" does not cancel the Approach Speed Control.
- Approach Speed Control should be canceled by ATC instruction: "Cancel Approach Speed Control".

MAX 230KT IAS
IN HOLDING PATTERN

NDB
250 AP : ---

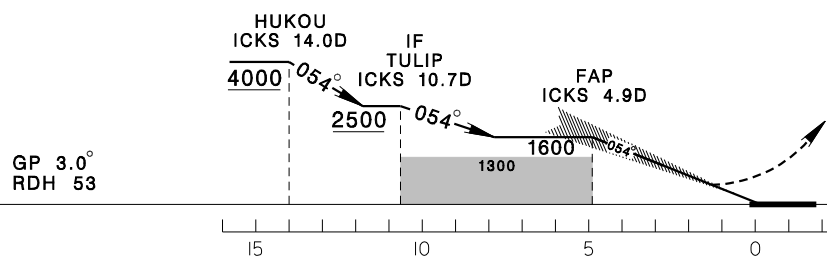
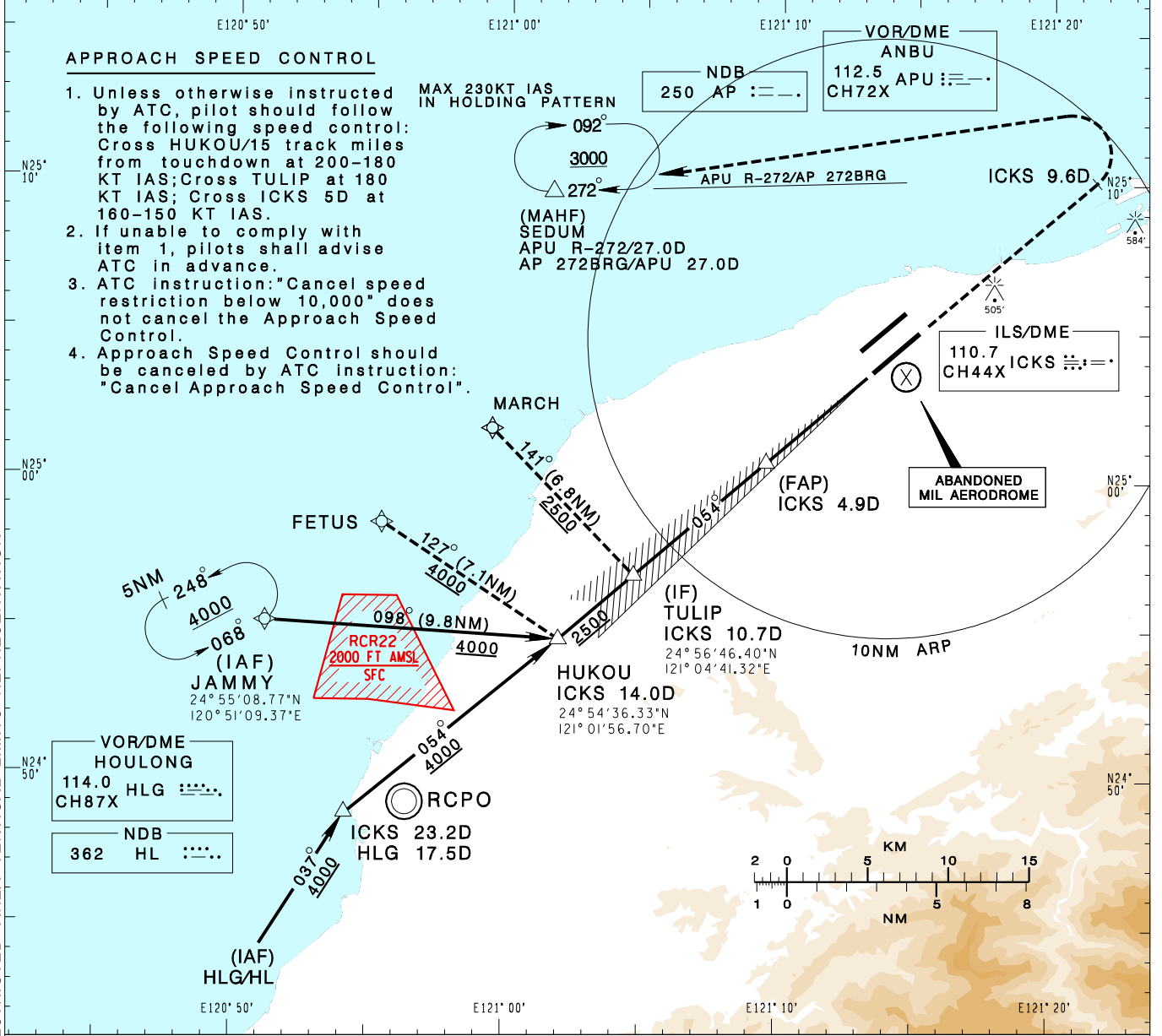
VOR/DME
ANBU
112.5 APU : ---
CH72X

(MAHF)
SEDUM
APU R-272/27.0D
AP 272BRG/APU 27.0D

ILS/DME
110.7 ICKS : ---
CH44X

ABANDONED
MIL AERODROME

CHANGES: NEW PAGE NUMBER, UPDATE RESTRICTED AREA VERTICAL LIMITS REPRESENTATION



MISSED APCH:
CLIMB ON HDG 054 UNTIL ICKS 9.6D,
THEN TURN LEFT DIRECT
TO SEDUM,
MAINTAIN 3000 AND HOLD.

MINIMA (OCA IN FT, VIS IN M, OCH IN FT)				
CATEGORY	A	B	C	D
STRAIGHT IN	207/RVR300 100	207/RVR300 100	217/RVR300 110	231/RVR300 124

NOTE
1. CIRCLING NOT AUTHORIZED.
2. ATS SURVEILLANCE REQUIRED
FOR JAMMY TO HUKOU AND
MISSED APCH SEGMENTS.
*DME REQUIRED.